

**Student health service = SSE**



**UNIVERSITĕ DE  
FRANCHE-COMTĕ**

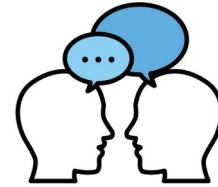
---

[univ-fcomte.fr](http://univ-fcomte.fr)

## The Student Health Service

There are 2 sites: Montbéliard and Belfort  
A nurse and a doctor will welcome you there to

- Information, advice, listening time



- Making an appointment for the various consultations offered

- Minor care (occasional analgesic delivery, bandage)



- Eye exam (▲ no prescription issued)



- Preventive medical examination



**The prefecture is requesting international students who have just arrived on French territory to have a medical examination with vaccination control**

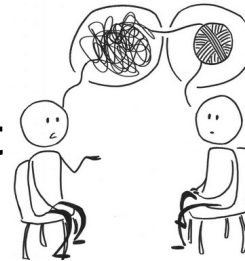
**This visit is Free !  
You don't need to wait to get your social security card**

**Contact us for an appointment**



## The SSE offers you Free consultations by appointment

### + Consultation with a psychologist



### + Consultation with a dietician

low-calorie diet, high-calorie diet, sports nutrition, vegetarian diet, digestive disorders, compulsive eating disorders and advice for returning to sport



### + Consultation for addiction problems



### + Medical consultation only for a specific health problem

(cold, gastro, fever, pill renewal)

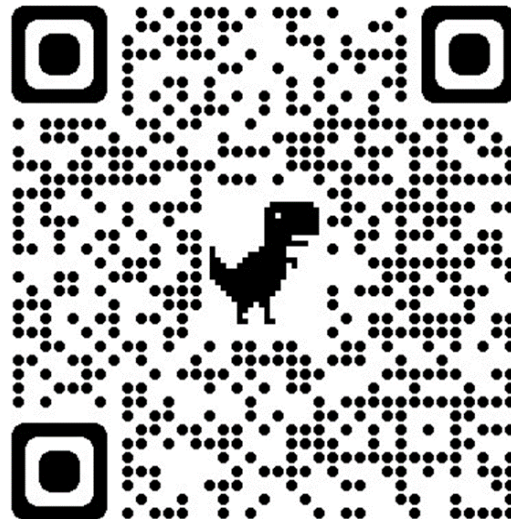


**For an appointment with psychologist, doctor, addiction consultation :**

**➔ Contact the SSE by phone, text or email (page 8 and 9)**

**For an appointment with the dietician :**

**➔ Make an appointment directly via the Doctolib QR code that you will find on the posters in your school building or ask the SSE**



### Montbéliard offices

Tuesday: 8 a.m. - 4 p.m.

Wednesday: 8 a.m. - 4 p.m. (no doctor)



where : Portes du Jura university campus  
3rd floor of the university library  
opposite the university restaurant



Contact us

By phone or text

03 81 99 47 38 or 07 85 64 01 60



## Belfort offices

**Monday: 9 a.m. - 6 p.m. (doctor present from 2**

**Thursday: 9 a.m. - 5 p.m.**

**Where : IUT Site Techn'Hom 1**

**19, avenue du Maréchal Juin**

**3rd floor of the building (E) BUT Informatique**



## Contact us

**By phone or text**



**84 58 77 78 or 07 85 64 01 60**

**By email:**

**sse-belfort@univ-fcomte.fr**



➔ **Doctor on call: Every evening from 8 p.m.  
Weekends and public holidays  
Call: 116 117**



➔ **For a medical EMERGENCY (physical or psychological)  
Call 15 or 112 (service available in several language)**



➔ **Youth health line Free, anonymous listening line  
(information, advice, guidance)  
7 days a week from 9 a.m. to 11 p.m.  
Call 0800 235 236 or [www.filsantejeunes.com](http://www.filsantejeunes.com)**



➔ **Listening line, suicide prevention  
7 days a week 24 hours a day Call 3114**

